

# 2010



<http://rgd.mcw.edu>



**This calendar is dedicated to the rat research community.  
Thank you for the continued support!**

**With appreciation,  
The RGD team**



Tin-Lay

Shun-Jen Way

Shun-Jen Way

Stan Saulderkind

John Doe

John Doe

John Doe

John Doe

Dr. Thomas Hariman

John Doe

John Doe

John Doe



FHH- Chr 14<sup>em</sup>/M<sup>cwi</sup>: Submitted by Michael G. Tordoff, Ph.D., Monell Chemical Senses Center, Philadelphia, PA  
Thanks to Physiogenix Inc., for providing the rat as part of their seed grant program. Photography by Paola Nogueras

# JANUARY 2010

SUN	MON	TUES	WED	THURS	FRI	SAT
					1	2
3	4	5	6	7	8	9
10	11	12	13	14	15	16
17	18	19	20	21	22	23
24	25	26	27	28	29	30
31						



BN x NU F3 male. Photo courtesy of Jerome Donohoe, Milwaukee WI

# FEBRUARY 2010

SUN	MON	TUES	WED	THURS	FRI	SAT
	1	2	3	4	5	6
7	8	9	10	11	12	13
14	15	16	17	18	19	20
21	22	23	24	25	26	27
28						



DA.E3-(D3Rat49-D3Rat6)/Rh: Photo courtesy of Carola Rintisch, Ph.D., Experimental Genetics of Cardiovascular Disease, Max-Delbruck-Center for Molecular Medicine

# MARCH 2010

SUN	MON	TUES	WED	THURS	FRI	SAT
	1	2	3	4	5	6
7	8	9	10	11	12	13
14	15	16	17	18	19	20
21	22	23	24	25	26	27
28	29	30	31			

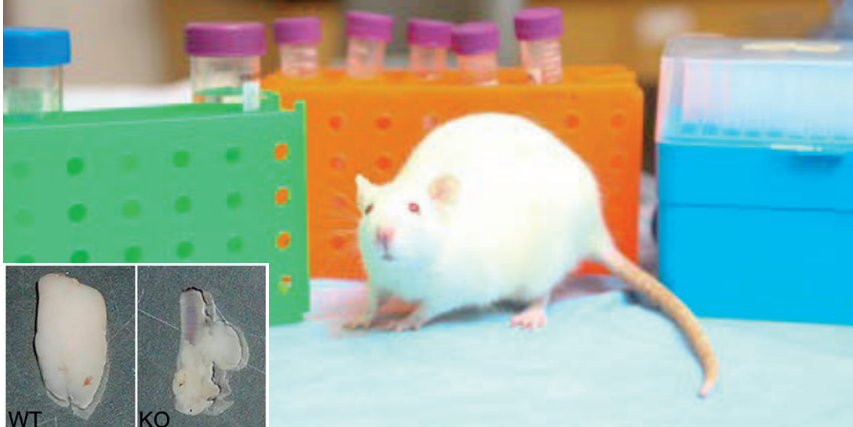


Photo by Stacey Granger

## Introducing the World's First SCID Rat Transposagen Biopharmaceutical's Ada TKO™

This transposon-mediated insertional mutation within the adenosine deaminase (Ada) gene is a model for a major cause of **Severe Combined ImmunoDeficiency** in humans. Neonatal Ada TKO™ rats, like Ada knockout mice, are athymic (see inset)

Submitted by Joseph C. Ruiz, Ph.D., Transposagen Biopharmaceuticals, Inc.

**APRIL  
2010**

SUN	MON	TUES	WED	THURS	FRI	SAT
				1	2	3
4	5	6	7	8	9	10
11	12	13	14	15	16	17
18	19	20	21	22	23	24
25	26	27	28	29	30	



FHH/EurMcwCrI: Photo courtesy of Kate Pritchett at Charles River Laboratories, <http://www.criver.com>

**MAY**  
**2010**

SUN	MON	TUES	WED	THURS	FRI	SAT
						1
2	3	4	5	6	7	8
9	10	11	12	13	14	15
16	17	18	19	20	21	22
23	24	25	26	27	28	29
30	31					



Lower Right: BN x NU F4 litter, Jerome Donohoe, Milwaukee WI

Upper Right: N:HS strain, Susan A. Brunelli, Ph.D., Developmental Neuroscience, Columbia University Medical Center, NY

Left: (DA/ZtmRhd x E3/ZtmRhd)F2, Carola Rintisch, Ph.D., Max-Delbruck-Center for Molecular Medicine

**JUNE  
2010**

SUN	MON	TUES	WED	THURS	FRI	SAT
		1	2	3	4	5
6	7	8	9	10	11	12
13	14	15	16	17	18	19
20	21	22	23	24	25	26
27	28	29	30			



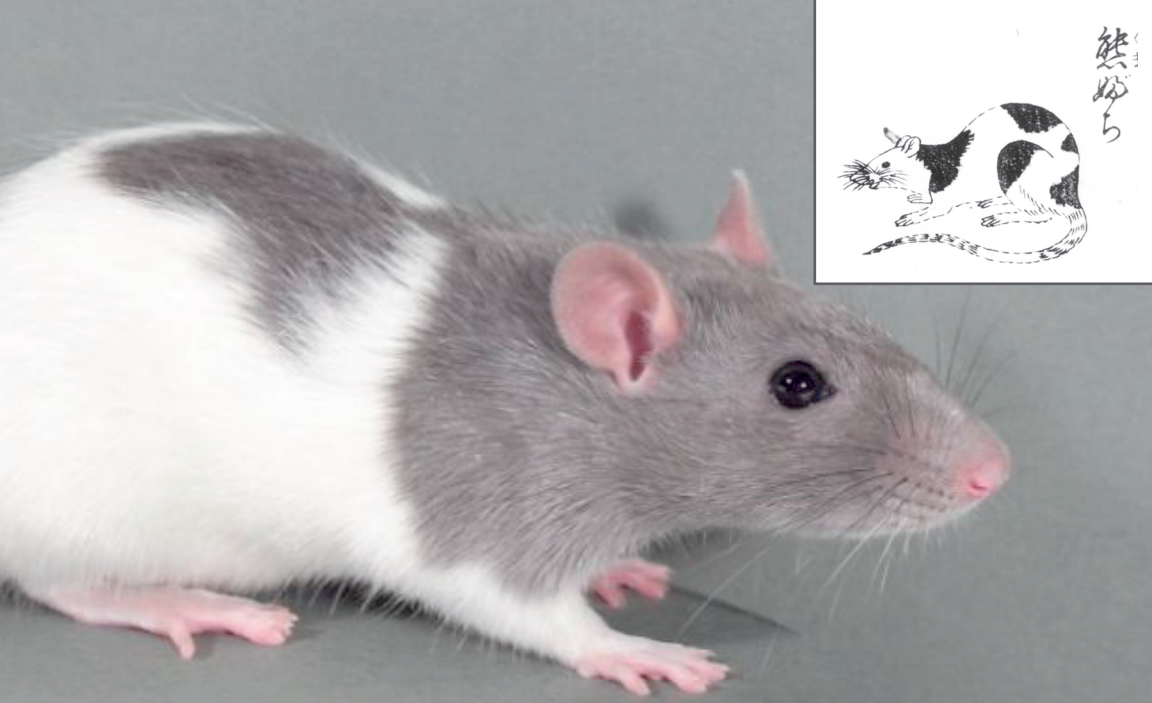


Photo of KFRS3B/Kyo submitted by Dr. Takashi Kuramoto Kyoto University.

Drawing of a white Nezumi with black spots, submitted by Mito Otsuki on behalf of Dr. Tadao Serikawa, National BioResource Project for the Rat in Japan, Kyoto University.

**JULY**  
**2010**

SUN	MON	TUES	WED	THURS	FRI	SAT
				1	2	3
4	5	6	7	8	9	10
11	12	13	14	15	16	17
18	19	20	21	22	23	24
25	26	27	28	29	30	31



ACI submitted by Paul E. Thomas, Ph.D., Environmental and Occupational Health Sciences Institute Proteomics Facility, Rutgers University, NJ

# AUGUST 2010

SUN	MON	TUES	WED	THURS	FRI	SAT
1	2	3	4	5	6	7
8	9	10	11	12	13	14
15	16	17	18	19	20	21
22	23	24	25	26	27	28
29	30	31				



Photo courtesy of Anne Hecht and Mary Shimoyama, Human & Molecular Genetics Center at the Medical College of Wisconsin, Milwaukee WI

**SEPTEMBER**  
**2010**

SUN	MON	TUES	WED	THURS	FRI	SAT
			1	2	3	4
5	6	7	8	9	10	11
12	13	14	15	16	17	18
19	20	21	22	23	24	25
26	27	28	29	30		



HCR/Mco (High endurance running capacity) submitted by Bina Joe, Ph.D., Department of Physiology and Pharmacology, University of Toledo College of Medicine

# OCTOBER 2010

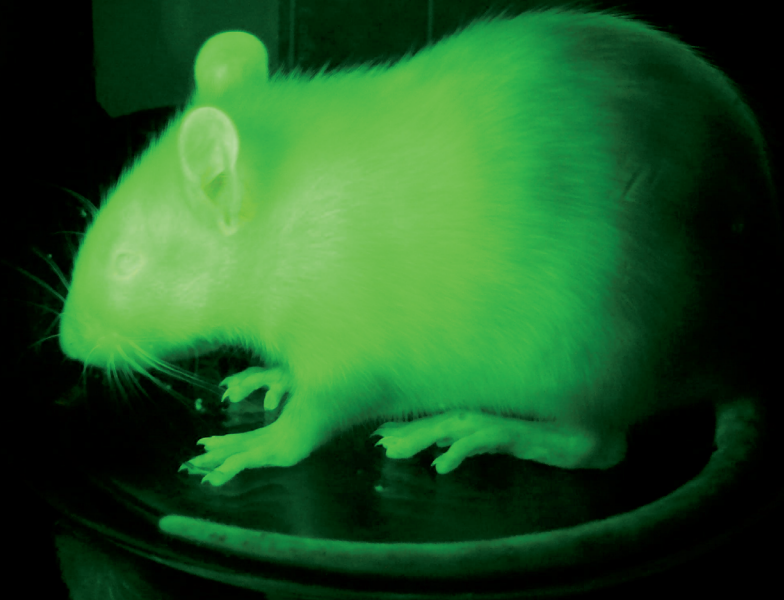
SUN	MON	TUES	WED	THURS	FRI	SAT
					1	2
3	4	5	6	7	8	9
10	11	12	13	14	15	16
17	18	19	20	21	22	23
24	25	26	27	28	29	30
31						



**SHR / Ola / (RMCE-Venus)1:** Developers-Vladimir Lanso, Vaclav Zidek, Michal Pravenec (Institute of Physiology AS CR, Prague, Czech Republic), Lajos Mates (Max Delbruck Center for Molecular Medicine, Berlin, Germany)

# NOVEMBER 2010

SUN	MON	TUES	WED	THURS	FRI	SAT
	1	2	3	4	5	6
7	8	9	10	11	12	13
14	15	16	17	18	19	20
21	22	23	24	25	26	27
28	29	30				



**SHR/Ola/(RMCE-Venus)1**: Developers-Vladimir Lansa, Vaclav Zidek, Michal Pravenec (Institute of Physiology AS CR, Prague, Czech Republic), Lajos Mates (Max Delbruck Center for Molecular Medicine, Berlin, Germany)

# DECEMBER 2010

SUN	MON	TUES	WED	THURS	FRI	SAT
			1	2	3	4
5	6	7	8	9	10	11
12	13	14	15	16	17	18
19	20	21	22	23	24	25
26	27	28	29	30	31	

# Please continue to support RGD by visiting our website at <http://rgd.mcw.edu>



## **Genes**

Map positions, functions and more



## **Function**

Gene Ontology, Phenotype, Pathway info



## **Rat Genome**

Browse the Rat Genome



## **Strains**

Search Strains



## **Diseases**

Genes, QTL & Strains related to Disease



## **Genome Tools**

Data mining, analysis and visualization



## **QTL**

Phenotypes & Traits linked to the genome



## **Phenotypes & Models**

Phenotype data, Assays, Husbandry and more



## **Pathways**

Pathway reports and diagrams

**Photographs on the front cover are courtesy of:** *(The credits are listed left to right)*

Anne Hecht, Medical College of Wisconsin • Mindy Dwinell, Ph.D., Medical College of Wisconsin

Jerome Donohoe, Milwaukee, WI • Dr. Vladimir Landa, Prague, Czech Republic

Anne Hecht, Medical College of Wisconsin • Jerome Donohoe, Milwaukee, WI

Carola Rintisch, Ph.D., Max Delbrück Center for Molecular Medicine, Berlin, Germany • Jerome Donohoe, Milwaukee, WI