

Viewing expression profiles from the RGD Downloads page

A [video tutorial](#) of this process is available on the [RGD YouTube Channel](#).

Right Click on the [GEO Series ID]_jbrowse_session.json file link and select the option “Save Link As...” to download the file to your local machine.

Name	Last modified	Size	Description
Parent Directory			-
GSE252116_jbrowse_session.json	2025-12-19 10:34	23K	
JBrowse2_README	2025-12-11 11:42	13	
RNAseq_lymphatic_vessel_Cnc_SD_M_GSM7993754.bigwig	2025-12-11 11:42	7.2M	
RNAseq_lymphatic_vessel_Cnc_SD_M_GSM7993755.bigwig	2025-12-11 11:42	7.5M	
RNAseq_lymphatic_vessel_Cnc_SD_M_GSM7993756.bigwig	2025-12-11 11:42	7.3M	
RNAseq_lymphatic_vessel_Cnc_SD_M_GSM7993757.bigwig	2025-12-11 11:42	6.8M	
RNAseq_lymphatic_vessel_Cnc_SD_M_GSM7993758.bigwig	2025-12-11 11:42	6.8M	
RNAseq_lymphatic_vessel_Cnc_SD_M_GSM7993759.bigwig	2025-12-11 11:42	7.1M	
RNAseq_lymphatic_vessel_Cnc_SD_M_GSM7993760.bigwig	2025-12-11 11:42	7.1M	
RNAseq_lymphatic_vessel_Cnc_SD_M_GSM7993761.bigwig	2025-12-11 11:42	7.0M	
RNAseq_lymphatic_vessel_Cnc_SD_M_GSM7993762.bigwig	2025-12-11 11:42	7.1M	

Navigate to JBrowse2 using this link <https://rgd.mcw.edu/rgdweb/jbrowse2/listing.jsp> or clicking on the JBrowse icon on the RGD homepage.

The screenshot shows the RGD homepage with a navigation bar at the top containing links for Home, Data, Analysis & Visualization, Diseases, Phenotypes & Models, Pathways, and Community. Below the navigation bar is a search bar and social media icons. A message states: "This repository is under review for potential modification in compliance with Administration directives." Below this is a section for "Other Species Portals" with icons for various species. The "Search" section includes filters for Genes, Strains, Ontology & Annotation, Ontomate (Literature), QTL, Orthologs, and Genomic Region. A "RGD Data Snapshot" button is also present. The "Analysis and Visualization" section features three tools: JBrowse Genome Browser (highlighted with a red box), Variant Visualizer, and VCMapp Synteny Browser. The JBrowse tool shows a genomic browser interface with tracks for genes and annotations.

Select Rat assembly GRCr8 found under the JBrowse2 header.

Enter JBrowse 1

Available JBrowse 1 Datasets

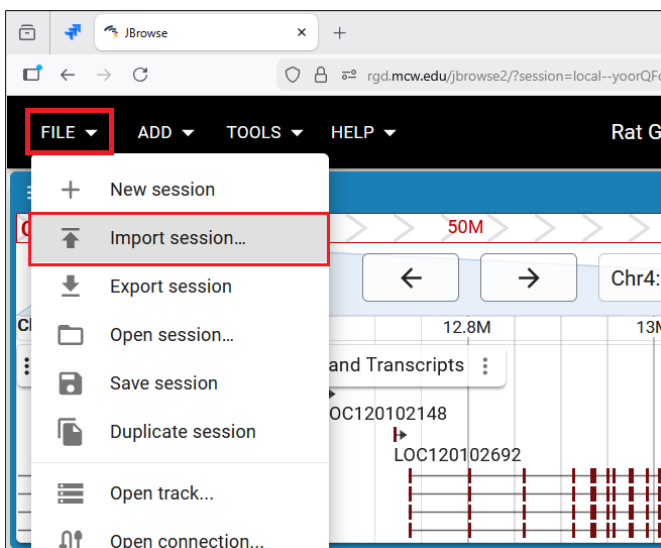
- Rat
 - [GRCr8](#)
 - [mRatBN7.2](#)
 - [Rnor_6.0](#)
 - [Rnor_5.0](#)
 - [RGSC_v3.4](#)
 - [UTH_Rnor_SHR_Utx](#)
 - [UTH_Rnor_SHRSP_BbbUtx_1.0](#)
 - [UTH_Rnor_WKY_Bbb_1.0](#)

Enter JBrowse 2

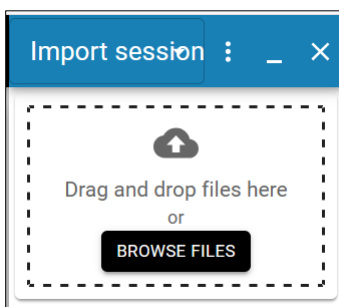
Available JBrowse 2 Datasets

- Rat (*Rattus norvegicus*)
 - [GRCr8](#)
 - [mRatBN7.2](#)
 - [Rnor_6.0](#)
 - [Rnor_5.0](#)
 - [RGSC_v3.4](#)
 - [UTH_Rnor_SHR_Utx](#)
 - [UTH_Rnor_SHRSP_BbbUtx_1.0](#)
 - [UTH_Rnor_WKY_Bbb_1.0](#)

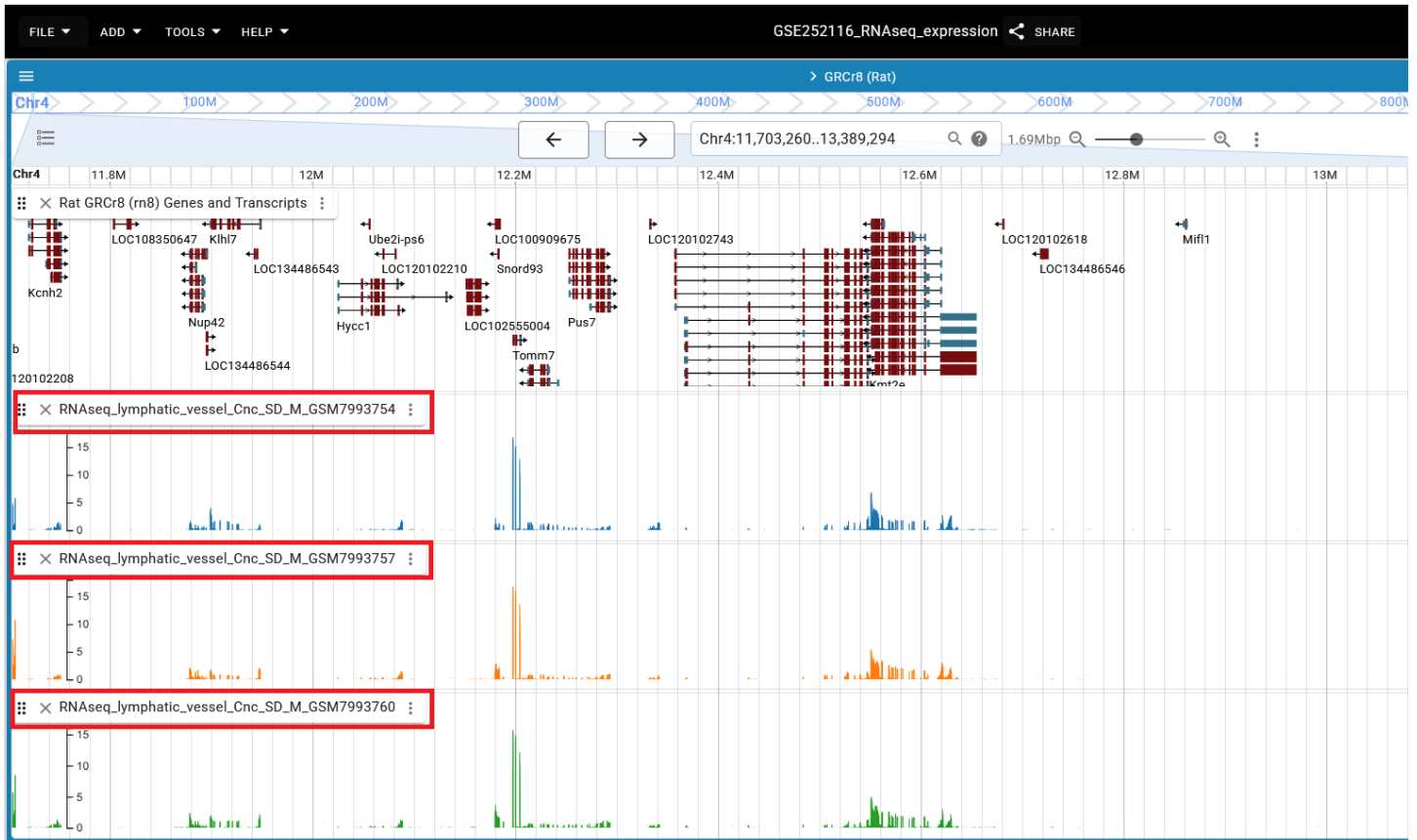
To import downloaded session json file from your local machine click on “File” in the top left-hand menu and select “import Session”



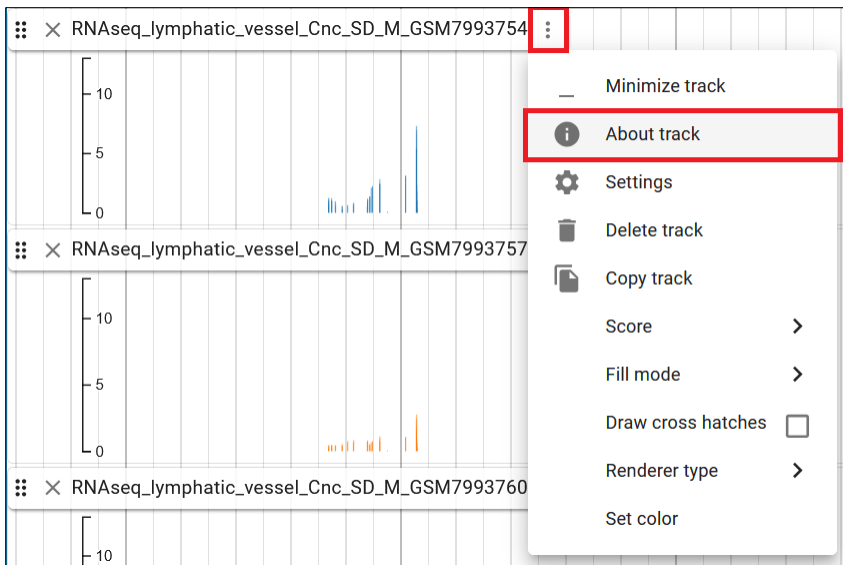
Drag and drop or select the session file from your local directory to the box in the right-hand menu.



Tracks are color coded on matching strain, tissue, sex, and experimental conditions. The below example shows 3 of the 9 tracks for study GSE252116 to highlight the color coding. The track name is in the box in the top-left side of the track. Track names include (in this order) tissue_strain_sex_GEO accession ID. If there are any differences in the strain, tissue, or sex, the track color will help to differentiate between groups.



If the strain, tissue, sex groupings are identical, but the track colors are different, this indicates there are differences in the experimental conditions. To find the experimental condition differences, examine the “Sample Characteristic” field in the “About Track” tab. Open the menu by clicking the : located after the track name. Select “About Track” from the menu.



Metadata Display. Note – fully curated metadata values are available on the expression report page in the RGD user interface. The “Sample Characteristic” (experimental condition) is outlined in the red box below.

RNAseq_lymphatic_vessel_Cnc_SD_M_GSM7993754	
CONFIGURATION	
type	QuantitativeTrack
trackId	RNAseq_lymphatic_vessel_Cnc_SD_M_GSM7993754
name	RNAseq_lymphatic_vessel_Cnc_SD_M_GSM7993754
assemblyNames	GRCr8
category	RNA-Seq lymphatic_vessel Cnc_SD
adapter.type	BigWigAdapter
adapter.bigWigLocation	https://download.rgd.mcw.edu/expression/GSE252116/ExpressionProfileBigWig/RNAseq_lymphatic_vessel_Cnc_SD_M_GSM7993754.bigwig
METADATA	
Sample Characteristic	adult;control condition;10.0 ml/kg distilled water
Tissue	lymphatic_vessel
Strain	Cnc_SD
RGD Strain Report	https://rgd.mcw.edu/rgdweb/report/strain/main.html?id=401959606
Sex	M
Computed Sex	M
RGD Metadata Report	https://rgd.mcw.edu/rgdweb/report/expressionStudy/main.html?geoAcc=GSE252116
Project Title	Banxia Xiexin decoction promotes gastric lymphatic pumping by regulating lymphatic smooth muscle cell contraction and energy metabolism in a stress-induced gastric ulceration rat model
Project Repository Link	https://www.ncbi.nlm.nih.gov/geo/query/acc.cgi?acc=GSE252116
Project Accession ID	GSE252116
Sample Accession ID	GSM7993754
PubMed ID	PMID:38499261
Data Processing	HPC RGD workflow
Read alignment	STAR v2.7.10b
Genome version	GCF_036323735.1 GRCr8
Expression Quantification	RSEM v1.3.1